

# Задвижки шиберно-ножевые двусторонние серии 762

## Технические характеристики



Архангельск (8182)63-90-72  
Астана (7172)727-132  
Астрахань (8512)99-46-04  
Барнаул (3852)73-04-60  
Белгород (4722)40-23-64  
Брянск (4832)59-03-52  
Владивосток (423)249-28-31  
Волгоград (844)278-03-48  
Вологда (8172)26-41-59  
Воронеж (473)204-51-73  
Екатеринбург (343)384-55-89  
Иваново (4932)77-34-06

Ижевск (3412)26-03-58  
Иркутск (395)279-98-46  
Казань (843)206-01-48  
Калининград (4012)72-03-81  
Калуга (4842)92-23-67  
Кемерово (3842)65-04-62  
Киров (8332)68-02-04  
Краснодар (861)203-40-90  
Красноярск (391)204-63-61  
Курск (4712)77-13-04  
Липецк (4742)52-20-81  
Киргизия (996)312-96-26-47

Магнитогорск (3519)55-03-13  
Москва (495)268-04-70  
Мурманск (8152)59-64-93  
Набережные Челны (8552)20-53-41  
Нижний Новгород (831)429-08-12  
Новокузнецк (3843)20-46-81  
Новосибирск (383)227-86-73  
Омск (3812)21-46-40  
Орел (4862)44-53-42  
Оренбург (3532)37-68-04  
Пенза (8412)22-31-16  
Казахстан (772)734-952-31

Пермь (342)205-81-47  
Ростов-на-Дону (863)308-18-15  
Рязань (4912)46-61-64  
Самара (846)206-03-16  
Санкт-Петербург (812)309-46-40  
Саратов (845)249-38-78  
Севастополь (8692)22-31-93  
Симферополь (3652)67-13-56  
Смоленск (4812)29-41-54  
Сочи (862)225-72-31  
Ставрополь (8652)20-65-13  
Таджикистан (992)427-82-92-69

Сургут (3462)77-98-35  
Тверь (4822)63-31-35  
Томск (3822)98-41-53  
Тула (4872)74-02-29  
Тюмень (3452)66-21-18  
Ульяновск (8422)24-23-59  
Уфа (347)229-48-12  
Хабаровск (4212)92-98-04  
Челябинск (351)202-03-61  
Череповец (8202)49-02-64  
Ярославль (4852)69-52-93

Единый адрес для всех регионов: [bya@nt-rt.ru](mailto:bya@nt-rt.ru) | [www.bray.nt-rt.ru](http://www.bray.nt-rt.ru)

---

# Задвижки шиберно-ножевые двусторонние серии 762

3" to 48"



## FEATURES & BENEFITS

### DESIGN FEATURES

Series 762 is a bidirectional heavy duty slurry valve, designed for demanding high pressure slurry applications. Twin elastomer seats and push-through gate design facilitate self-cleaning and prevent media build up.

The durable ductile iron body is offered in a two-piece bolted flange style. When fully open, the valve is full bore, offering no resistance to line media.

- 1 Upper and lower protective stem cover is standard in all models, increasing cycle life in hazardous environments.
- 2 Fully encapsulated J-ring providing sleeve reinforcement and memory assist, guaranteeing bidirectional zero leakage performance.
- 3 In the open position, the energized sleeves shield all metal components from direct contact with the flowing process media.
- 4 Gate available in a wide range of corrosion resistant alloys to suit the pressure rating and application.
- 5 The design provides unobstructed flow path, extending sleeve life and minimizing pressure drop across valve.
- 6 Flanged two-piece bolted body allows for easy maintenance and is drilled and tapped to country standards.
- 7 Optional bottom flush plate with tapped ports, allows for safe discharge of media and easy flush water connection.
- 8 Seat retainers are standard on all sizes and are provided to ensure proper and uniform compression is maintained on the seats.



Series 762 Bidirectional Heavy Duty Slurry Valve

## INDUSTRY APPLICATIONS

### Mining

- > Primary Milling
- > Secondary Milling
- > Primary Cyclone
- > Secondary Cyclone
- > Flotation Cell
- > Thickener
- > Filter Pump

### HPAL/POX

- > Autoclave Application Process Pumps

### Power

### Pulp & Paper

### Alumina

### Chemical

### Cement

## STANDARD CONSTRUCTION

|                       |                         |
|-----------------------|-------------------------|
| <b>Body</b>           | DI up to 28 / WCB 30-48 |
| <b>Gate</b>           | 316                     |
| <b>Seat</b>           | Natural Rubber          |
| <b>Stem</b>           | 304                     |
| <b>Gland Plate</b>    | Carbon Steel            |
| <b>Secondary Seal</b> | EPDM                    |
| <b>Topworks</b>       | Steel                   |

## TECHNICAL SPECIFICATIONS

| <b>Size Range</b>                    | NPS 3 to 48<br>DN 80 to 1200                                                                                                                                                                                                                                                                                                                                                                                                                                                                           |             |                  |                                   |                                    |                                     |                                     |                                      |                                     |  |                                     |
|--------------------------------------|--------------------------------------------------------------------------------------------------------------------------------------------------------------------------------------------------------------------------------------------------------------------------------------------------------------------------------------------------------------------------------------------------------------------------------------------------------------------------------------------------------|-------------|------------------|-----------------------------------|------------------------------------|-------------------------------------|-------------------------------------|--------------------------------------|-------------------------------------|--|-------------------------------------|
| <b>Body Style</b>                    | Two Piece Bolted   Flanged                                                                                                                                                                                                                                                                                                                                                                                                                                                                             |             |                  |                                   |                                    |                                     |                                     |                                      |                                     |  |                                     |
| <b>Pressure Rating</b>               | <table border="1"> <thead> <tr> <th>SS 316 Gate</th> <th>Duplex 2205 Gate</th> </tr> </thead> <tbody> <tr> <td>NPS 3-24 100psi   DN 80-600 7 bar</td> <td>NPS 3-18 232psi   DN 80-450 16 bar</td> </tr> <tr> <td>NPS 26-42 75psi   DN 650-1050 5 bar</td> <td>NPS 20-24 150psi   DN 500-600 10bar</td> </tr> <tr> <td>NPS 44-48 50psi   DN 1100-1200 3 bar</td> <td>NPS 26-42 100psi   DN 650-1050 7bar</td> </tr> <tr> <td></td> <td>NPS 44-48 75psi   DN 1100-1200 5bar</td> </tr> </tbody> </table> | SS 316 Gate | Duplex 2205 Gate | NPS 3-24 100psi   DN 80-600 7 bar | NPS 3-18 232psi   DN 80-450 16 bar | NPS 26-42 75psi   DN 650-1050 5 bar | NPS 20-24 150psi   DN 500-600 10bar | NPS 44-48 50psi   DN 1100-1200 3 bar | NPS 26-42 100psi   DN 650-1050 7bar |  | NPS 44-48 75psi   DN 1100-1200 5bar |
| SS 316 Gate                          | Duplex 2205 Gate                                                                                                                                                                                                                                                                                                                                                                                                                                                                                       |             |                  |                                   |                                    |                                     |                                     |                                      |                                     |  |                                     |
| NPS 3-24 100psi   DN 80-600 7 bar    | NPS 3-18 232psi   DN 80-450 16 bar                                                                                                                                                                                                                                                                                                                                                                                                                                                                     |             |                  |                                   |                                    |                                     |                                     |                                      |                                     |  |                                     |
| NPS 26-42 75psi   DN 650-1050 5 bar  | NPS 20-24 150psi   DN 500-600 10bar                                                                                                                                                                                                                                                                                                                                                                                                                                                                    |             |                  |                                   |                                    |                                     |                                     |                                      |                                     |  |                                     |
| NPS 44-48 50psi   DN 1100-1200 3 bar | NPS 26-42 100psi   DN 650-1050 7bar                                                                                                                                                                                                                                                                                                                                                                                                                                                                    |             |                  |                                   |                                    |                                     |                                     |                                      |                                     |  |                                     |
|                                      | NPS 44-48 75psi   DN 1100-1200 5bar                                                                                                                                                                                                                                                                                                                                                                                                                                                                    |             |                  |                                   |                                    |                                     |                                     |                                      |                                     |  |                                     |
| <b>Drilling</b>                      | ASME B16.5 CL150<br>ASME B16.47 CL150                                                                                                                                                                                                                                                                                                                                                                                                                                                                  |             |                  |                                   |                                    |                                     |                                     |                                      |                                     |  |                                     |
| <b>Face to Face</b>                  | Per Industry Standard                                                                                                                                                                                                                                                                                                                                                                                                                                                                                  |             |                  |                                   |                                    |                                     |                                     |                                      |                                     |  |                                     |
| <b>Certification</b>                 | Canadian CRN   PED Category I Module A (Group 2 liquids)                                                                                                                                                                                                                                                                                                                                                                                                                                               |             |                  |                                   |                                    |                                     |                                     |                                      |                                     |  |                                     |
| <b>Design Standard</b>               | Manufacturer Standard                                                                                                                                                                                                                                                                                                                                                                                                                                                                                  |             |                  |                                   |                                    |                                     |                                     |                                      |                                     |  |                                     |
| <b>Testing Standard</b>              | Manufacturer Standard <sup>1</sup>                                                                                                                                                                                                                                                                                                                                                                                                                                                                     |             |                  |                                   |                                    |                                     |                                     |                                      |                                     |  |                                     |

**NOTE<sup>1</sup>** 762 valves are elastomer sleeved slurry valves and MSS SP-81 and MSS SP-151 does not apply. The valves are tested for bi-directional, zero leakage across the seats.

## GATE OPTIONS

304, 317 Stainless Steel  
SAF 2507 Duplex  
SAF 2205 Duplex  
17-4PH Stainless Steel  
Hastelloy® C  
Monel®  
Titanium

## BODY OPTIONS

Carbon Steel (WCB)  
CF8 Stainless Steel  
CF8M Stainless Steel  
CF3M Stainless Steel  
SAF 2205 Duplex  
SAF 2507 Duplex

## SEAT OPTIONS



|                       |                              |
|-----------------------|------------------------------|
| <b>Natural Rubber</b> | -60 to 165°F<br>-51 to 74°C  |
| <b>Buna-N</b>         | -34 to 194°F<br>-36 to 90°C  |
| <b>EPDM-HT*</b>       | -65 to 302°F<br>-54 to 150°C |

\* Exposure to continuous elevated temperatures will result in premature aging of the elastomer.  
<sup>1</sup> Do not operate the valve if the media in the line is frozen.

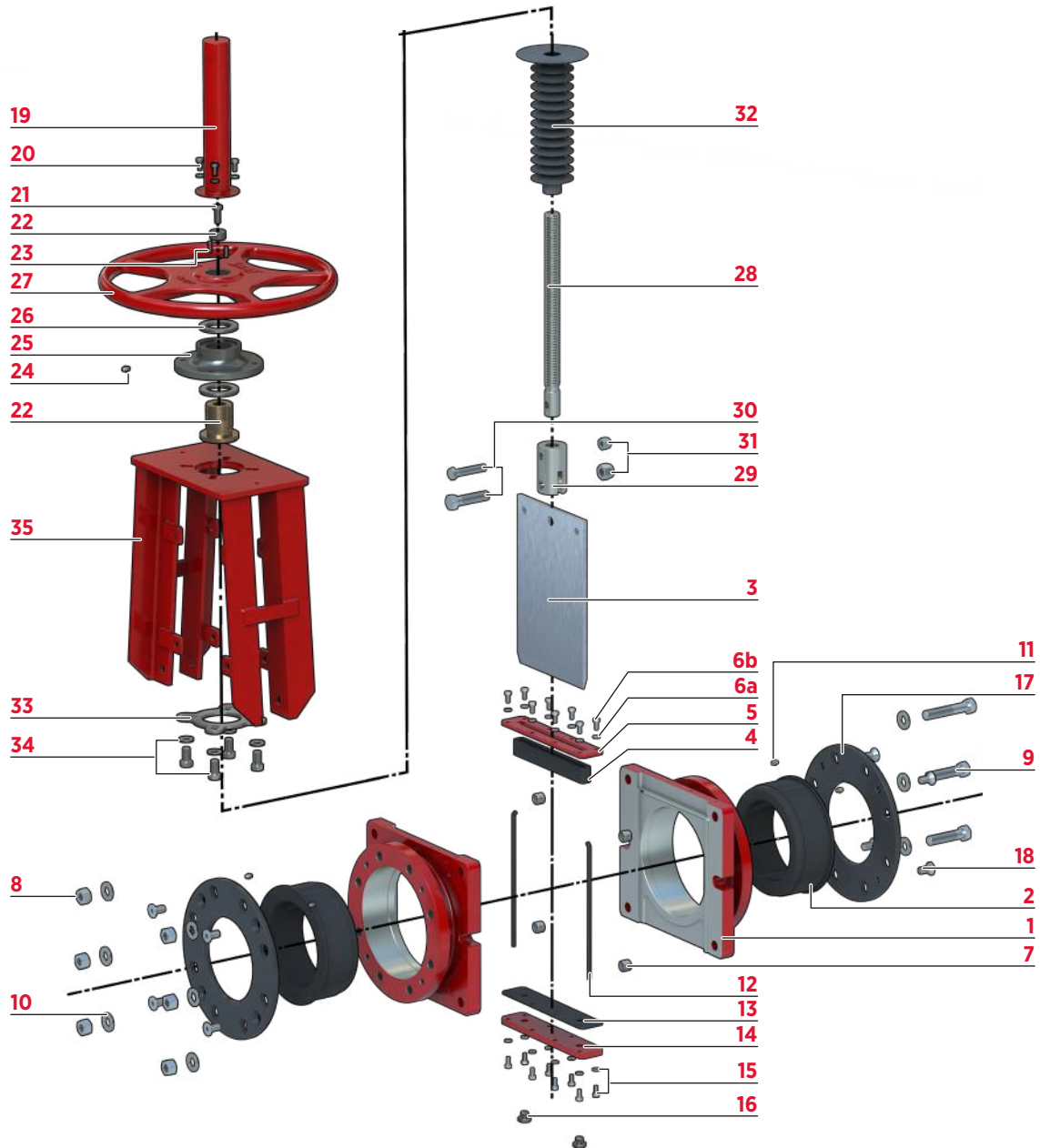
# MATERIALS OF CONSTRUCTION

## BILL OF MATERIALS & PARTS CALL OUT

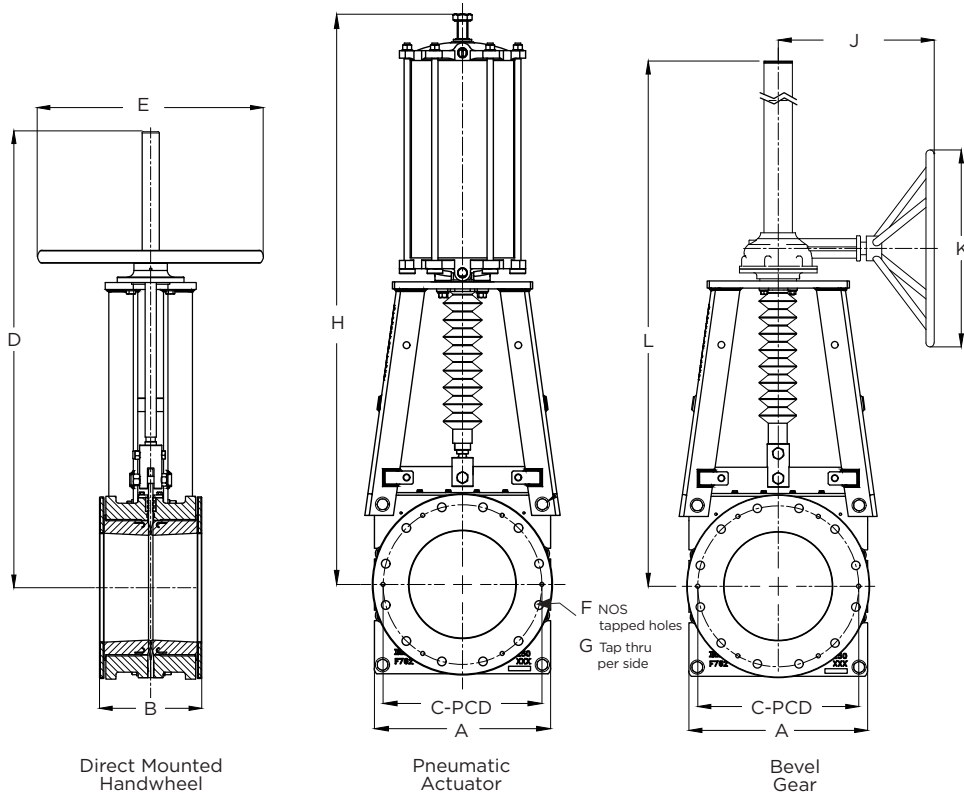
| Item | Description           |
|------|-----------------------|
| 1    | Body                  |
| 2    | Sleeve                |
| 3    | Gate                  |
| 4    | Secondary Seal        |
| 5    | Gland Plate           |
| 6a   | Gland Plate Washers   |
| 6b   | Gland Plate Fasteners |
| 7    | Locating Bush         |
| 8    | Nylock Nut            |
| 9    | Body Bolt             |
| 10   | Body Bolt Washer      |
| 11   | Grease Nipple         |

| Item | Description                            |
|------|----------------------------------------|
| 12   | Body O-Ring                            |
| 13   | Drain Plate Gasket (optional)          |
| 14   | Drain Plate (optional)                 |
| 15   | Drain Plate Fasteners & Washers (opt.) |
| 16   | Drain Plug (optional)                  |
| 17   | Seat Retainer                          |
| 18   | Seat Retainer Screws                   |
| 19   | Stem Guard                             |
| 20   | Stem Guard Bolt & Nut                  |
| 21   | Travel Stop Fastener                   |
| 22   | Travel Stop                            |
| 23   | Grub Screws                            |

| Item | Description                   |
|------|-------------------------------|
| 24   | Grease Nipple                 |
| 25   | Handwheel Assembly Housing    |
| 26   | Thrust Bearing                |
| 27   | Handwheel                     |
| 28   | Stem                          |
| 29   | Clevis                        |
| 30   | Clevis Bolt                   |
| 31   | Clevis Lock Nut               |
| 32   | Bellows                       |
| 33   | Bellow Flange                 |
| 34   | Bellow Mounting Fasteners     |
| 35   | Superstructure/Tower Assembly |



# DIMENSIONS & WEIGHTS



**NOTE**

- 1 Consult factory for hydraulic and electric actuator dimensions.
- 2 Dimensions are approximate and subject to change. Consult factory for certified drawings.

\* In conformance with ASME B16.5, Class 150 for sizes NPS 3 (DN80) through NPS 24 (DN600) and per ASME B16.47 Series A for sizes > NPS 24.

| DIMENSIONS (Inches) |       |       |       |       |    |    |          |       |       |       |        |
|---------------------|-------|-------|-------|-------|----|----|----------|-------|-------|-------|--------|
| NPS                 | A     | B     | CPCD  | D     | E  | F  | G        | H     | J     | K     | L      |
| 3                   | 8.66  | 6.88  | 6.00  | 22.24 | 12 | 4  | 5/8"-11  | 24.80 | 8.86  | 11.81 | 26.77  |
| 4                   | 10.04 | 6.88  | 7.50  | 23.94 | 12 | 8  | 5/8"-11  | 25.98 | 8.86  | 11.81 | 28.34  |
| 6                   | 12.32 | 7.00  | 9.50  | 31.58 | 16 | 8  | 3/4"-10  | 34.02 | 9.45  | 11.81 | 35.43  |
| 8                   | 13.98 | 7.28  | 11.75 | 36.93 | 20 | 8  | 3/4"-10  | 39.57 | 9.45  | 11.81 | 43.50  |
| 10                  | 15.83 | 8.89  | 14.25 | 42.32 | 20 | 12 | 7/8"-9   | 44.88 | 10.24 | 11.81 | 49.60  |
| 12                  | 19.09 | 10.15 | 17.00 | --    | -- | 12 | 7/8"-9   | 50.79 | 15.55 | 19.69 | 52.75  |
| 14                  | 21.06 | 10.15 | 18.75 | --    | -- | 12 | 1"-8     | 58.46 | 15.55 | 19.69 | 67.52  |
| 16                  | 23.43 | 11.02 | 21.25 | --    | -- | 16 | 1"-8     | 62.99 | 16.93 | 19.69 | 72.83  |
| 18                  | 26.38 | 12.28 | 22.75 | --    | -- | 16 | 1-1/8"-7 | 68.50 | 18.11 | 19.69 | 79.13  |
| 20                  | 28.35 | 14.13 | 25.00 | --    | -- | 20 | 1-1/8"-7 | 72.83 | 18.50 | 29.53 | 83.26  |
| 24                  | 33.86 | 14.64 | 29.50 | --    | -- | 20 | 1-1/4"-7 | 87.70 | 21.26 | 39.37 | 100.59 |

| WEIGHT (lbs) |                    |               |
|--------------|--------------------|---------------|
| HAND WHEEL   | PNEUMATIC ACTUATOR | GEAR OPERATOR |
| 83           | 90                 | 88            |
| 105          | 115                | 110           |
| 165          | 156                | 168           |
| 225          | 254                | 225           |
| 297          | 370                | 298           |
| --           | 558                | 447           |
| --           | 783                | 595           |
| --           | 970                | 756           |
| --           | 1587               | 1146          |
| --           | 1905               | 1424          |
| --           | 2976               | 2088          |

| DIMENSIONS (Millimeters) |     |     |       |      |     |    |          |      |     |      |      |
|--------------------------|-----|-----|-------|------|-----|----|----------|------|-----|------|------|
| DN                       | A   | B   | CPCD  | D    | E   | F  | G        | H    | J   | K    | L    |
| 80                       | 220 | 175 | 152.4 | 565  | 300 | 4  | 5/8"-11  | 630  | 225 | 300  | 680  |
| 100                      | 255 | 175 | 190.5 | 608  | 300 | 8  | 5/8"-11  | 660  | 225 | 300  | 720  |
| 150                      | 313 | 178 | 241.3 | 802  | 400 | 8  | 3/4"-10  | 864  | 240 | 300  | 900  |
| 200                      | 355 | 185 | 298.5 | 938  | 500 | 8  | 3/4"-10  | 1005 | 240 | 300  | 1105 |
| 250                      | 402 | 226 | 362   | 1075 | 500 | 12 | 7/8"-9   | 1140 | 260 | 300  | 1260 |
| 300                      | 485 | 258 | 431.8 | --   | --  | 12 | 7/8"-9   | 1290 | 395 | 500  | 1340 |
| 350                      | 535 | 258 | 476.3 | --   | --  | 12 | 1"-8     | 1485 | 395 | 500  | 1715 |
| 400                      | 595 | 280 | 539.8 | --   | --  | 16 | 1"-8     | 1600 | 430 | 500  | 1850 |
| 450                      | 670 | 312 | 577.9 | --   | --  | 16 | 1-1/8"-7 | 1740 | 460 | 500  | 2010 |
| 500                      | 720 | 359 | 635   | --   | --  | 20 | 1-1/8"-7 | 1850 | 470 | 750  | 2115 |
| 600                      | 860 | 372 | 749.3 | --   | --  | 20 | 1-1/4"-7 | 2230 | 540 | 1000 | 2555 |

| WEIGHT (kg) |      |     |
|-------------|------|-----|
| 38          | 41   | 40  |
| 48          | 52   | 50  |
| 75          | 71   | 76  |
| 102         | 115  | 102 |
| 135         | 168  | 135 |
| --          | 253  | 203 |
| --          | 355  | 270 |
| --          | 440  | 343 |
| --          | 720  | 520 |
| --          | 864  | 646 |
| --          | 1350 | 947 |

**OPTIONS & ACCESSORIES**

**ACTUATOR OPTIONS | SHOWN IN RED**



Direct Mounted Handwheel



Bevel Gear Operator



Double Acting Pneumatic Actuator



Hydraulic Actuator



Electric Actuator

# OPTIONS & ACCESSORIES

ADDITIONAL ACCESSORIES | SHOWN IN RED



Handwheel Lock Out



Pneumatic Failsafe



Non-Rising Stem



Gate Guard



Manual Override



Chain Wheel



Mechanical Limit Switch



Proximity Sensor



Solenoid



Drain Plate



Архангельск (8182)63-90-72  
Астана (7172)727-132  
Астрахань (8512)99-46-04  
Барнаул (3852)73-04-60  
Белгород (4722)40-23-64  
Брянск (4832)59-03-52  
Владивосток (423)249-28-31  
Волгоград (844)278-03-48  
Вологда (8172)26-41-59  
Воронеж (473)204-51-73  
Екатеринбург (343)384-55-89  
Иваново (4932)77-34-06  
Ижевск (3412)26-03-58  
Иркутск (395)279-98-46  
Казань (843)206-01-48  
Калининград (4012)72-03-81  
Калуга (4842)92-23-67  
Кемерово (3842)65-04-62  
Киров (8332)68-02-04  
Краснодар (861)203-40-90  
Красноярск (391)204-63-61  
Курск (4712)77-13-04  
Липецк (4742)52-20-81  
Киргизия (996)312-96-26-47  
Магнитогорск (3519)55-03-13  
Москва (495)268-04-70  
Мурманск (8152)59-64-93  
Набережные Челны (8552)20-53-41  
Нижний Новгород (831)429-08-12  
Новокузнецк (3843)20-46-81  
Новосибирск (383)227-86-73  
Омск (3812)21-46-40  
Орел (4862)44-53-42  
Оренбург (3532)37-68-04  
Пенза (8412)22-31-16  
Казахстан (772)734-952-31  
Пермь (342)205-81-47  
Ростов-на-Дону (863)308-18-15  
Рязань (4912)46-61-64  
Самара (846)206-03-16  
Санкт-Петербург (812)309-46-40  
Саратов (845)249-38-78  
Севастополь (8692)22-31-93  
Симферополь (3652)67-13-56  
Смоленск (4812)29-41-54  
Сочи (862)225-72-31  
Ставрополь (8652)20-65-13  
Таджикистан (992)427-82-92-69  
Сургут (3462)77-98-35  
Тверь (4822)63-31-35  
Томск (3822)98-41-53  
Тула (4872)74-02-29  
Тюмень (3452)66-21-18  
Ульяновск (8422)24-23-59  
Уфа (347)229-48-12  
Хабаровск (4212)92-98-04  
Челябинск (351)202-03-61  
Череповец (8202)49-02-64  
Ярославль (4852)69-52-93

Единый адрес для всех регионов: [bya@nt-rt.ru](mailto:bya@nt-rt.ru) | | [www.bray.nt-rt.ru](http://www.bray.nt-rt.ru)