

Соленоиды серии 60

Технические характеристики



Архангельск (8182)63-90-72
Астана (7172)727-132
Астрахань (8512)99-46-04
Барнаул (3852)73-04-60
Белгород (4722)40-23-64
Брянск (4832)59-03-52
Владивосток (423)249-28-31
Волгоград (844)278-03-48
Вологда (8172)26-41-59
Воронеж (473)204-51-73
Екатеринбург (343)384-55-89
Иваново (4932)77-34-06

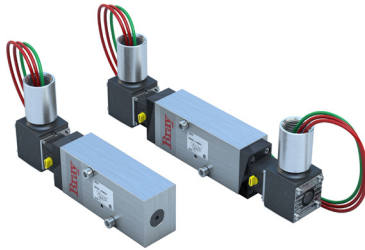
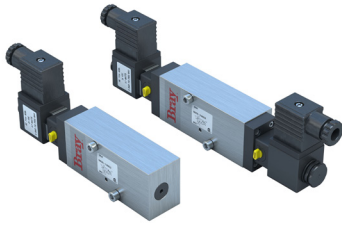
Ижевск (3412)26-03-58
Иркутск (395)279-98-46
Казань (843)206-01-48
Калининград (4012)72-03-81
Калуга (4842)92-23-67
Кемерово (3842)65-04-62
Киров (8332)68-02-04
Краснодар (861)203-40-90
Красноярск (391)204-63-61
Курск (4712)77-13-04
Липецк (4742)52-20-81
Киргизия (996)312-96-26-47

Магнитогорск (3519)55-03-13
Москва (495)268-04-70
Мурманск (8152)59-64-93
Набережные Челны (8552)20-53-41
Нижний Новгород (831)429-08-12
Новокузнецк (3843)20-46-81
Новосибирск (383)227-86-73
Омск (3812)21-46-40
Орел (4862)44-53-42
Оренбург (3532)37-68-04
Пенза (8412)22-31-16
Казахстан (772)734-952-31

Пермь (342)205-81-47
Ростов-на-Дону (863)308-18-15
Рязань (4912)46-61-64
Самара (846)206-03-16
Санкт-Петербург (812)309-46-40
Саратов (845)249-38-78
Севастополь (8692)22-31-93
Симферополь (3652)67-13-56
Смоленск (4812)29-41-54
Сочи (862)225-72-31
Ставрополь (8652)20-65-13
Таджикистан (992)427-82-92-69

Сургут (3462)77-98-35
Тверь (4822)63-31-35
Томск (3822)98-41-53
Тула (4872)74-02-29
Тюмень (3452)66-21-18
Ульяновск (8422)24-23-59
Уфа (347)229-48-12
Хабаровск (4212)92-98-04
Челябинск (351)202-03-61
Череповец (8202)49-02-64
Ярославль (4852)69-52-93

Единый адрес для всех регионов: bya@nt-rt.ru | www.bray.nt-rt.ru



FEATURES

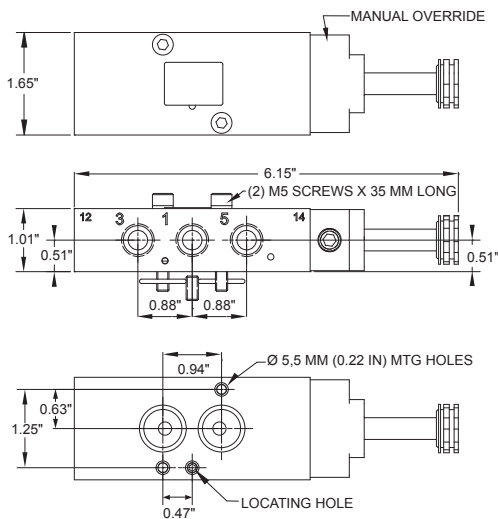
- Compact and modular design
- Pilot operated spool control valve
- Convertible from 3-way (3/2) to 4-way (5/2)
- Mechanical manual override

TECHNICAL DATA

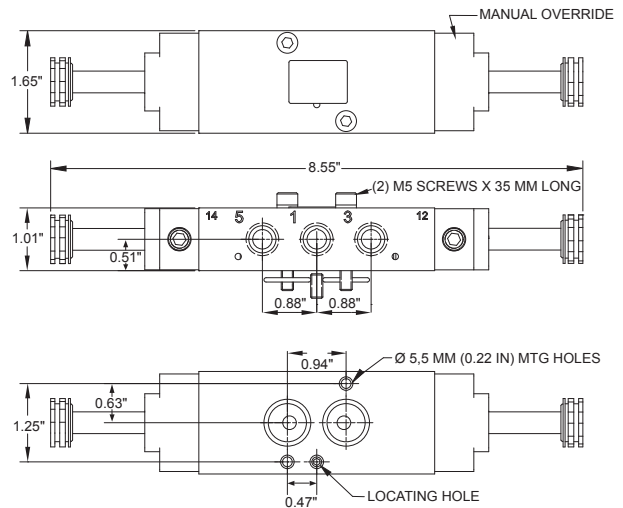
| | |
|----------------------------|------------------------------------------------------------------------------|
| Body | Aluminum |
| Seals | Buna-N |
| Coil Body | Polyamid 66 |
| Coil Connection | DIN 43650 Type "A" |
| Mounting Type | Direct Mount NAMUR Interface |
| Temperature | 0F -123F (-18D - 50C) |
| Media | Filtered Air |
| Operating Pressure | 35 to 150 psig (2.4 to 10.3 bar) |
| Voltage | 24VDC |
| Current | .14Amp |
| Resistance | 177 Ohms |
| Power | 0.7 Watt |
| Intrinsically Safe Ratings | Ex ia |
| | Class 1 Groups A,B,C,D |
| | Class II Groups E,F,G |
| | Class III Div 1 T5 |
| Ports | 1/4 Inch NPT |
| Operation | 5 port 2 way (5/2) |
| Mouting | VDI/VDE 3845 NAMUR |
| Coil Options | Dual or Single |
| Coil Override | Manual Turn Lock |
| Part Numbers | |
| 600250-21540536 | 24 VDC; Low Power, DIN Type "A" Connection |
| 600250-21526536 | 24 VDC; Intrinsically Safe; DIN Type "A" Connection |
| 600250-21536536 | 24 VDC; Intrinsically Safe; DIN Type "A" Connection |
| 600500-71107533 | DIN Type "A" Plug Connector w/1/2" NPT,Female Plug Connection (For VAC, VDC) |
| 600251-71106533 | DIN Type "A" Plug Conn. w/cable gland for Intrinsically Safe, VDC |
| Accessories | |
| 600500-71107533 | DIN Type "A" Plug Connector w/1/2" NPT,Female Plug Connection (For VAC, VDC) |
| 600251-71106533 | DIN Type "A" Plug Conn. w/cable gland for Intrinsically Safe, VDC |
| 090005-76148533 | Intrinsically Safe 24 VDC (Type "A" DIN Connector) |
| | |
| | |
| | |
| | |
| | |

DIMENSIONS

SINGLE

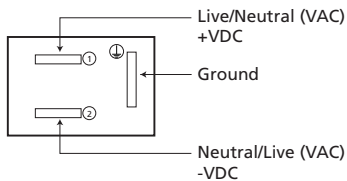


DOUBLE

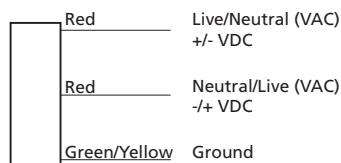


ELECTRICAL CONNECTION

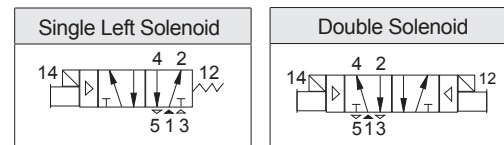
DIN 43650B



Flying Leads



PNEUMATIC SCHEMATICS



ACCESSORIES

| Connector | Description |
|-----------------|---------------------------------------------------------------------------------------------------------------------------------------------------------------------------|
| 600250-71106533 | Form B Type I Plug Connector (DIN 43650) with Cable Gland PG9 |
| 600500-71106533 | Form B Type I Plug Connector (DIN 43650) with 1/2" NPT Female Connection |
| 090004-76146533 | Form B Type I Plug Connector (DIN 43650), LED and Surge Protected 110-220 VAC, to Flying Leads, 4 meters |
| 090004-76147533 | Form B Type I Plug Connector (DIN 43650), LED and Surge Protected 24-30 VDC, to Flying Leads, 4 meters |
| 600250-23663536 | Y-Connector Cordset - Form B Type I Plug Connector (DIN 43650) to M12 female straight connector (4-pin sensor side) AND M12 male straight connector (5-pin system side) |
| 600250-23667536 | Y-Connector Cordset - Form B Type I Plug Connector (DIN 43650) to 7/8" female straight connector (5-pin sensor side) AND 7/8" male straight connector (6-pin system side) |
| 090001-76159882 | S-Connector Cordset - Form B Type I Plug Connector (DIN 43650) to M12 male right angle (2-pins + PE), 0.6 meters |

Архангельск (8182)63-90-72
Астана (7172)727-132
Астрахань (8512)99-46-04
Барнаул (3852)73-04-60
Белгород (4722)40-23-64
Брянск (4832)59-03-52
Владивосток (423)249-28-31
Волгоград (844)278-03-48
Вологда (8172)26-41-59
Воронеж (473)204-51-73
Екатеринбург (343)384-55-89
Иваново (4932)77-34-06
Ижевск (3412)26-03-58
Иркутск (395)279-98-46
Казань (843)206-01-48
Калининград (4012)72-03-81
Калуга (4842)92-23-67
Кемерово (3842)65-04-62
Киров (8332)68-02-04
Краснодар (861)203-40-90
Красноярск (391)204-63-61
Курск (4712)77-13-04
Липецк (4742)52-20-81
Киргизия (996)312-96-26-47
Магнитогорск (3519)55-03-13
Москва (495)268-04-70
Мурманск (8152)59-64-93
Набережные Челны (8552)20-53-41
Нижний Новгород (831)429-08-12
Новокузнецк (3843)20-46-81
Новосибирск (383)227-86-73
Омск (3812)21-46-40
Орел (4862)44-53-42
Оренбург (3532)37-68-04
Пенза (8412)22-31-16
Казахстан (772)734-952-31
Пермь (342)205-81-47
Ростов-на-Дону (863)308-18-15
Рязань (4912)46-61-64
Самара (846)206-03-16
Санкт-Петербург (812)309-46-40
Саратов (845)249-38-78
Севастополь (8692)22-31-93
Симферополь (3652)67-13-56
Смоленск (4812)29-41-54
Сочи (862)225-72-31
Ставрополь (8652)20-65-13
Таджикистан (992)427-82-92-69
Сургут (3462)77-98-35
Тверь (4822)63-31-35
Томск (3822)98-41-53
Тула (4872)74-02-29
Тюмень (3452)66-21-18
Ульяновск (8422)24-23-59
Уфа (347)229-48-12
Хабаровск (4212)92-98-04
Челябинск (351)202-03-61
Череповец (8202)49-02-64
Ярославль (4852)69-52-93

Единый адрес для всех регионов: bya@nt-rt.ru | | www.bray.nt-rt.ru